

Spectacular Townhome Features:

- Roomy one bedroom ranch homes, and two and three bedroom townhomes
- Private entrances
- Full basements
- Central air conditioning
- Carpeting throughout
- Window treatments throughout
- Laundry facilities
- Washer/dryer hookups
- Garbage disposals
- Additional storage available

Lovely Community Features:

- Beautiful landscaped setting
- Covered parking
- 24-hour emergency maintenance
- Near I-696, I-94 and I-75
- Walk to Macomb Community College South Campus
- Close to Macomb Mall
- Within close proximity to Lake St. Clair and metropolitan parks
- Minutes to dining and entertainment

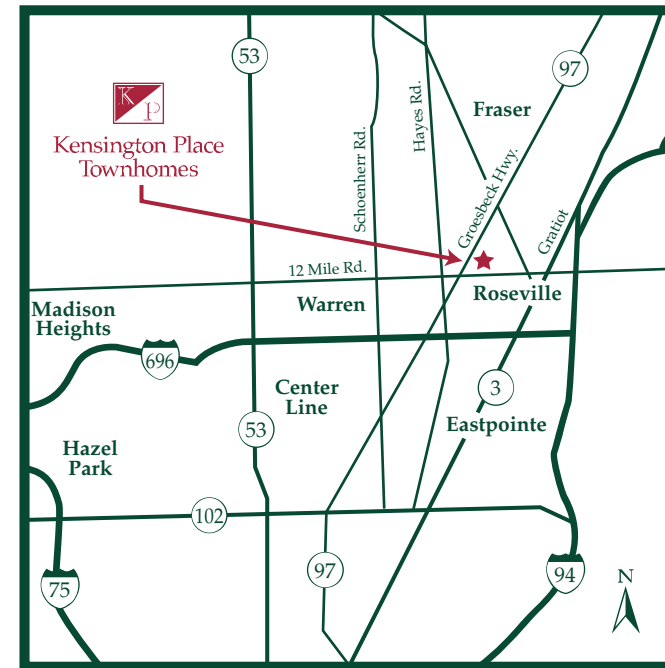


Kensington Place
Townhomes



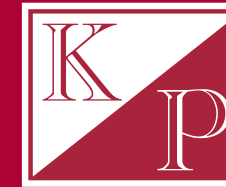
Kensington Place
Townhomes

16651 East Twelve Mile Road
Roseville, MI 48066
(586) 771-2100 • (586) 771-2580 FAX



Professionally Managed by:

 BERGER REALTY GROUP, INC.
E-MAIL: kensington@bergerrealtygroup.com



Kensington Place
Townhomes



Kensington Place
Townhomes

If comfort and convenience are what you've been searching for, you'll find it here at the luxurious Kensington Place Townhomes. Private entrances draw you into bright, spacious rooms designed with all the amenities you need. Relax on your sunny patio, set amongst grassy landscaped grounds. Your maintenance-free home is located in a superior setting near fine dining, distinctive educational centers and exclusive shopping. Major freeways are just minutes away, taking you to Lake St. Clair and metropolitan Detroit in no time. Discover the best in townhome living at Kensington Place, created exclusively for you!

A Solid Partnership

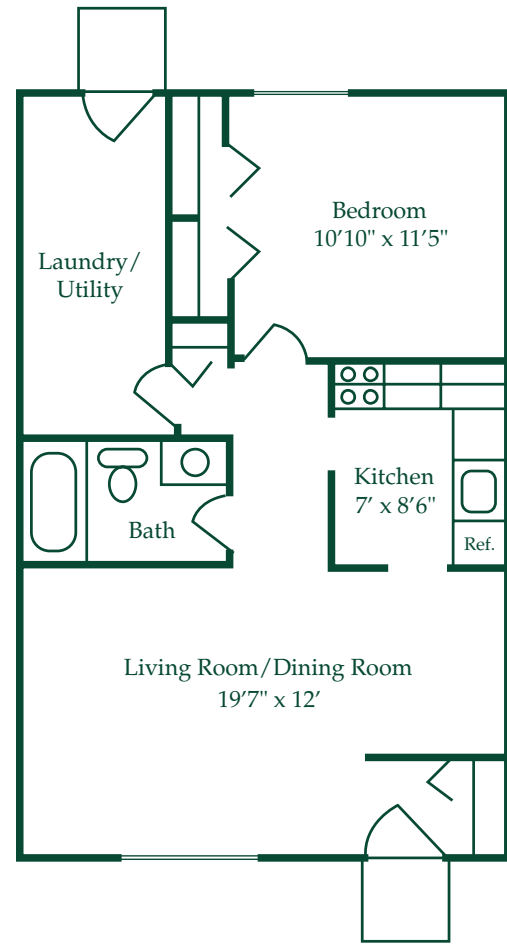
Berger Realty Group, Inc. has been in the residential management and construction business since the mid-1960's. In the past thirty years, we have built or acquired over ten thousand apartments and constructed hundreds of homes throughout the Midwest and Florida. We are a family owned and operated company.

Our commitment to our customers reflects our strong family values. Our philosophy of superior service, attentive management and attention to detail is unsurpassed in the industry. Please accept our invitation to join our extended family of residents and homeowners.

THE KINGSWOOD

1 Bedroom • 1 Bath • 648 Sq. Ft.*

\$ _____



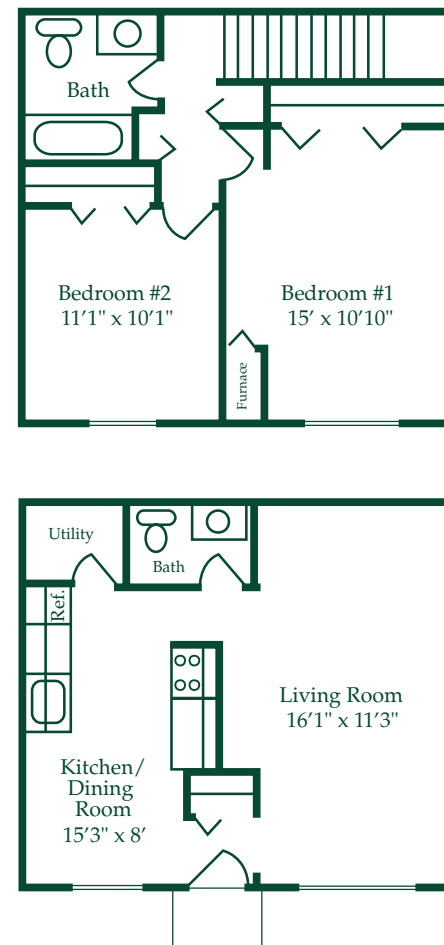
Kensington Place
Townhomes

*Room dimensions
are approximate.

THE WOODHAVEN

2 Bedroom • 1 1/2 Bath • Without Basement • 850 Sq. Ft.*

\$ _____



Kensington Place
Townhomes

*Room dimensions
are approximate.

THE KENSINGTON

2 Bedroom • 1 1/2 Bath • With Basement • 892 Sq. Ft.*

\$ _____



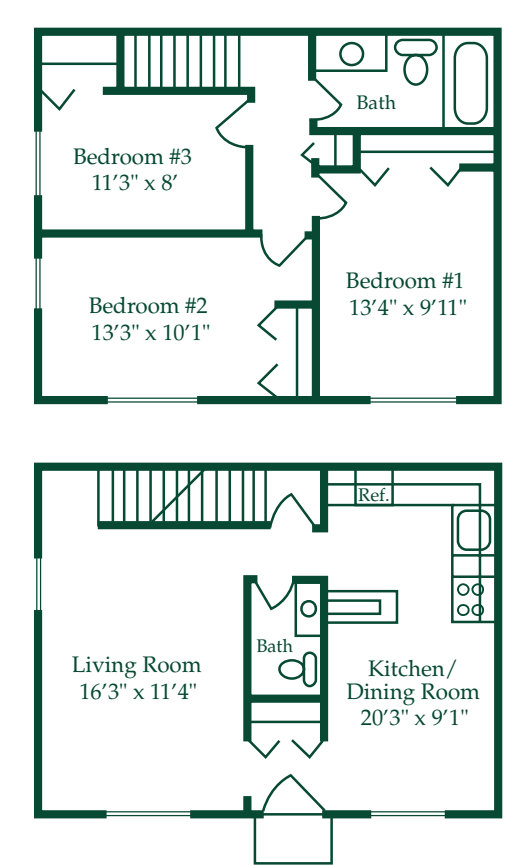
Kensington Place
Townhomes

*Square footage does not
include basement. Room
dimensions are approximate.

THE WOODBRIDGE

3 Bedroom • 1 1/2 Bath • With Basement • 1,065 Sq. Ft.*

\$ _____



Kensington Place
Townhomes

*Square footage does not
include basement. Room
dimensions are approximate.