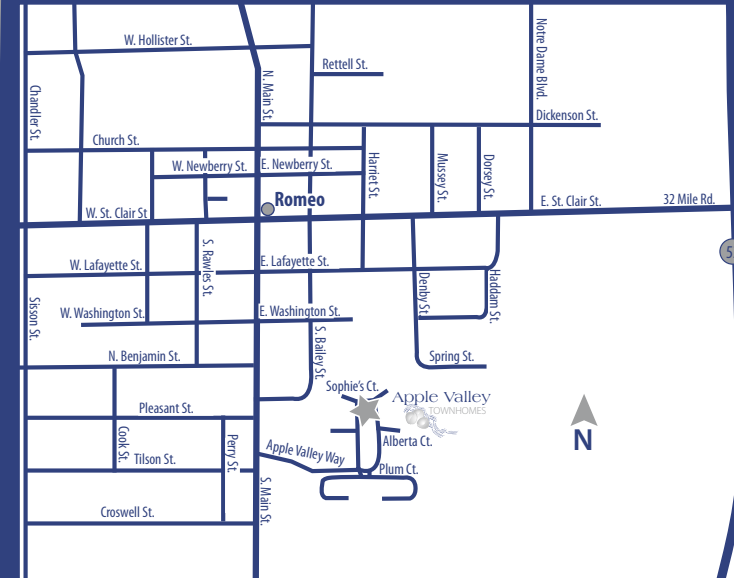


Inviting homes include:

- Bright, airy one, two and three bedroom ranch and townhomes
- Powder room in select homes
- Private entrance
- Large foyer
- Private patio or balcony
- Sunny dining room
- Kitchen includes refrigerator, stove and disposal
- Plush neutral carpeting throughout
- Decorator window treatments
- Laundry facilities available to select apartments
- Walk-in closet available in master bedroom
- Utility room
- Storage closet
- 24-hour maintenance
- Welcoming community building
- Walk to dining, shopping and entertainment
- Moments to health care centers
- Near Michigan's diverse year-round recreation
- Close to I-94, M-53 and M-59
- Children's Tot Lot

Apple Valley...the name evokes pleasurable thoughts of comfortable days and cozy nights.

Apple Valley townhomes delivers just that friendly feeling, in a beautiful community offering easy living for residents of all ages. Each home presents large living areas and time-saving amenities; such as separate dining area, private patio or balcony and in-home storage. Seniors will appreciate the additional convenience of large closets and barrier-free first-floor living. Apple Valley is centered near historic downtown Romeo's charming shops and cafes, as well as outdoor venues such as cider mills and the annual Peach Festival. Your small-town setting is near public transportation and just minutes to major freeways, universities and business venues, offering you the best of both worlds!



Apple Valley TOWNHOMES



231 Apple Blossom Way
Romeo, MI 48065
(586) 752-4166
Fax: (586) 752-9799



Professionally Managed by:
SLB Property Management, LLC



THE IDA RED

ONE BEDROOM SENIOR RANCH • 650 SQ. FT.



THE JONATHAN

TWO BEDROOM SENIOR RANCH • 795 SQ. FT.



THE GALA

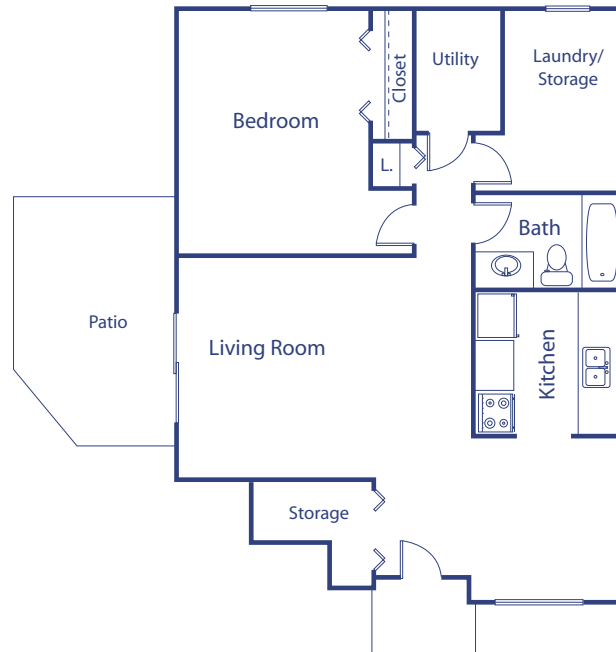
TWO BEDROOM TOWNHOME • 900 SQ. FT.



THE MACINTOSH

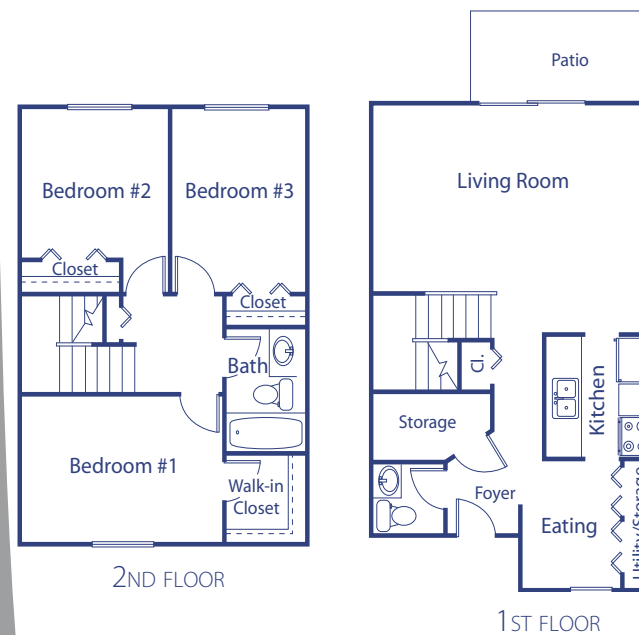
ONE BEDROOM • 600 SQ. FT.

\$ _____

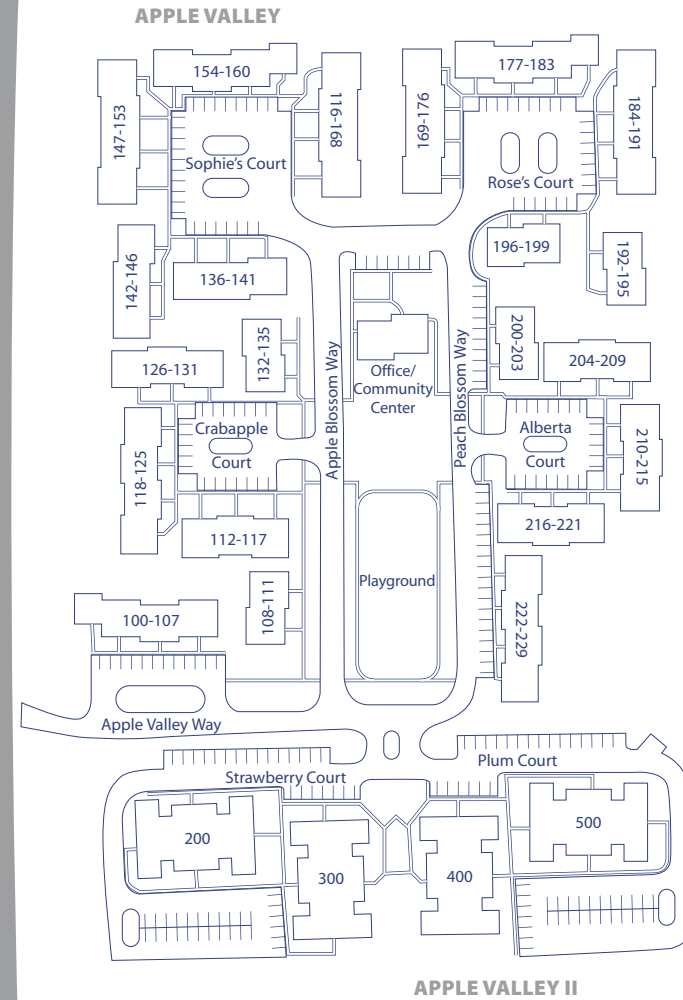


THE EMPIRE

THREE BEDROOM TOWNHOME • 1100 SQ. FT.



COMMUNITY MAP



*Dimensions are approximate.

*Dimensions are approximate.

*Dimensions are approximate.